

Powered by **OKIN**



# Innovative Solutions for Drive & System Technology

# DEWERTOKIN TECHNOLOGY GROUP

DewertOkin Technology Group Ltd. is a subsidiary of Phoenix Meccano Group in Switzerland. Its two brands, Dewert and OKIN, are originated in North Rhine-Westphalia, Germany, counting over 40 years of history. With 5 production bases in Asia-Pacific and Europe, and a total of nearly 3,000 employees, DewertOkin provides integrated hardware and software solutions for Smart Home, Smart Healthcare, Smart Office and other scenarios.

- Smart Manufacturing
- Production Real-time Traceability
- Global Supply Chain
- Fast Delivery Guarantee



## ONE-STOP SOLUTION FOR SMART FURNITURE

Under the brand OKIN you can find a wide range of products for smart furniture (such as motion upholstery, massage chairs, theatre seating, recliners and adjustable beds) and adjustable office desk and chair systems. Whereas the brand Dewert offers high performance products for medical applications (such as medical and nursing beds).

The first in the industry to propose a One-stop Smart Solution concept, our company serves over 1/5 of the world's smart furniture manufacturers and is the preferred supplier of many world-class brands. With a presence in over 28 countries and regions around the world, DewertOkin is a true industry leader.

Over 40 years focusing on the development and innovation of One-stop Smart Solutions.  
5 innovative R&D centers around the world with post-doctoral workstations as the core.  
Over 1,500 patents, including more than 900 patents for inventions.



- Sustainability has always been a priority for DewertOkin. In keeping with our dedication and ongoing efforts to have green factories and products while fostering a healthier and greener working environment, our Industrial Park complies with the requirements of ISO 45001, ISO 14001, and ISO 50001 certifications.
- All DewertOkin products, as well as their components, meet the European requirements for registration and prevention of chemical substances such as REACH and RoHS.
- Our product solutions are certified in accordance with DIN EN ISO 9001:2015 and the CB test report.
- Approved by authoritative certification institutions.





# Business Solutions

## Reliable Technology for Adjustable Beds

Electrically adjustable beds ensure outstanding comfort in everyday life and turn your own bedroom into an oasis of well-being. The key features for this type of bed are the smooth changes in position and the excellent user-friendliness. This is achieved by taking advantage of the intelligent components provided by OKIN. OKIN is the world's leading supplier of drive technology for motorized adjustable beds. The OKIN brand encompasses a broad portfolio for users – with products that can be used for mid-range and high-end applications.



## Comfort Beds

A modern, stylish design is combined with optimum sleeping comfort and individually adjustable movement profiles. End users benefit from the gentle adjustments of the

sleeping, reading or sitting positions and extras such as an optional relaxing massage function, practical floor lighting and convenient operations via smartphone app.



## Box Spring Beds

A comfortable mattress and relaxing environment are important, but the technology integrated into a box spring bed is also essential for ergonomic positioning and reliable functionality. Drives for box spring beds should be particularly powerful.

Our single and double drives with a high pushing force move the foot and head sections smoothly and quietly. In addition, our intelligent control units and elegant handsets allow you to create individual movement profiles.

# DOUBLE DRIVES

The OKIMAT is a powerful, stable, low-maintenance and sustainable double drive for comfort beds/box spring beds. Users benefit from the fast adjustment speed, the low-noise setting and the convenient operating functionality. Thanks to its high pushing force this drive is ideal for heavy comfort beds and box spring beds.



## Double Drives (Wired Systems) For Box-Spring Beds or Slatted Frames

### OKIMAT 6



|                        |   |
|------------------------|---|
| Input                  | 100-240 V/AC  |
| Min. Installation Size | 581mm   |
| Stroke                 | 69mm, 74mm, 87mm  |
| Load capacity          | 2 x 6000N   |
| Power                  | Switch Mode Power Supply (SMPS)   |
| Optionals              | <ul style="list-style-type: none"><li>– Emergency lowering function</li><li>– External control unit for RF/BT/Memo and underbed light</li></ul> |

### OKIMAT 4



|                           |   |
|---------------------------|---|
| Input                     | 100-240V/AC   |
| Minimum installation size | 581mm   |
| Stroke                    | 69mm, 74mm, 87mm  |
| Load capacity             | 2 x 6000 N  |
| Power                     | Switch Mode Power Supply (SMPS)   |
| Optionals                 | <ul style="list-style-type: none"><li>– Emergency lowering function</li><li>– External control unit for RF/BT/Memo and underbed light</li></ul> |



OKIMAT 6 RF-BT

Double Drives (RF Systems)  
For Box-Spring Beds or Slatted Frames



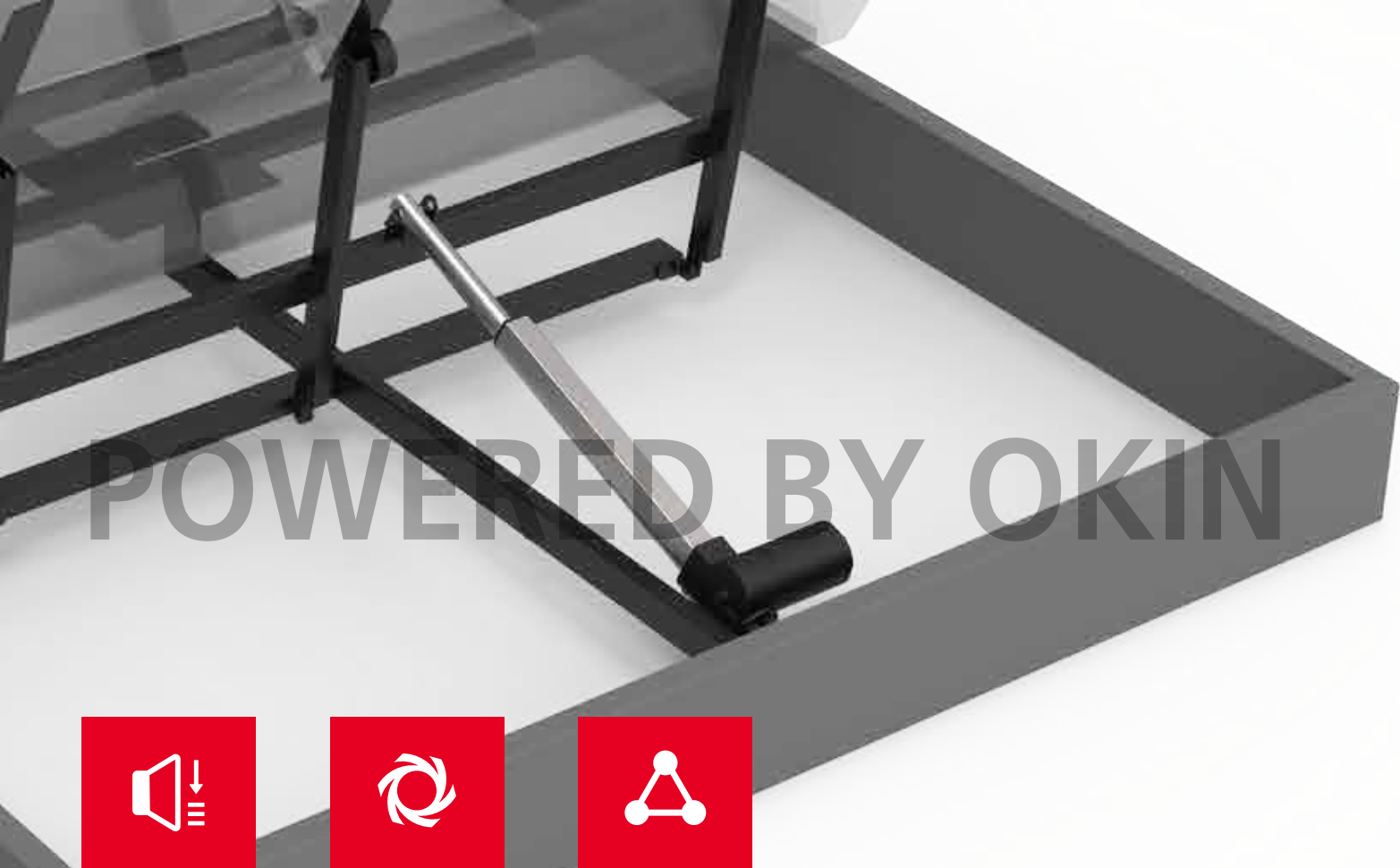
|                        |                                 |
|------------------------|---------------------------------|
| Input                  | 100-240 V/AC                    |
| Min. Installation Size | 581mm                           |
| Stroke                 | 69mm, 74mm, 87mm                |
| Load capacity          | 2*6000N                         |
| Power                  | Switch Mode Power Supply (SMPS) |
| Optionals              | – Integrated underbed light     |

OKIMAT4 RF-BT



|                           |  |
|---------------------------|--|
| Input                     | 100-240V/AC  |
| Minimum installation size | 581mm  |
| Stroke                    | 69mm, 74mm, 87mm   |
| Load capacity             | 2*6500N  |
| Power                     | Switch Mode Power Supply (SMPS)  |
| Optionals                 | – Integrated RF / Memory positions<br>– Integrated underbed light<br>– Ports for 3rd/4th actuators and massage motors<br>– Dedicated MFP port for external LED<br>– USB charger and massage motors |





Noiseless

Powerful

Stable

JLDQ.19

JLDQ.14B

Single Drives



|                           |                       |                       |
|---------------------------|-----------------------|-----------------------|
| Minimum installation size | Stroke + 150mm        | Stroke + 135mm        |
| Load capacity             | 6000N max             | 3000N max             |
| Certifications            | UL, FCC, UKCA, CE, CB | UL, FCC, IC, UKCA, CE |

JLDQ.20

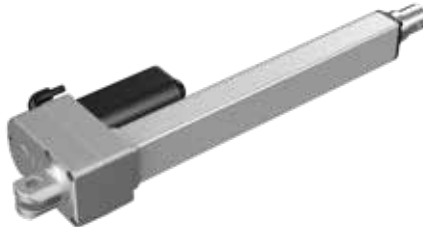
Alphadrive 5 Single Drives



|                           |                   |                  |
|---------------------------|-------------------|------------------|
| Minimum installation size | Stroke + 135mm    | Stroke + 136mm   |
| Load capacity             | 4000N max         | 6000N max        |
| Certifications            | UL, FCC, UKCA, CE | UL,FCC, UKCA, CE |

JLDQ.32

DA.29



|                           |                |                |
|---------------------------|----------------|----------------|
| Minimum installation size | Stroke + 130mm | Stroke + 168mm |
| Load capacity             | 3500N max      | 8000N max      |
| Certifications            | CE, UL         | CE, ICE        |

# HANDSETS

OKIN always works with the customer in mind, so we can provide you with the ideal solution. We consider all relevant factors in advance: including the best option for a convenient bed adjustment at the touch of a button – whether it’s an individual cable-based handset or a wireless hand-held transmitter.

## Wireless Handsets

● RF Eco / RF.80



6 buttons  
Controls 2 actuators

● RF-Liteline



7 buttons  
Controls 2 actuators  
Blue backlight  
Optionals: Flashlight

● RF-Flashline / RF.34



3 / 5 / 7 / 9 buttons  
Controls 1-4 actuators  
Blue / White backlight  
Optionals: Flashlight, UBL,  
Child safety lock, Pair button

● RF.28



7 / 9 buttons  
Controls 2-4 actuators  
Blue backlight  
Optionals: Flashlight, UBL,  
Child safety lock

● RF.29



11 buttons  
Controls 2-5 actuators  
No backlight  
Optionals: Flashlight, UBL,  
Child safety lock,  
Pair button, Massage

● RF-Style



12 buttons  
Controls 2-5 actuators  
Blue backlight  
Optionals: Child safety lock,  
Flashlight

● RF-Topline



11 / 15 buttons  
Controls 2-5 actuators  
Blue backlight  
Optionals: Flashlight

● RF-Touchline



21 buttons  
Controls 2-5 actuators  
White backlight  
Optionals: Flashlight, Massage



## Wireless Handsets

### ● RF.51



11 / 19 / 21 buttons, controls 2-5 actuators

White backlight

One-touch Flat and Zero-G position buttons

Preset memory positions: 1-6

Optionals: Flashlight, UBL, Child safety lock, Pair button, Massage

### ● RF.67



7 / 9 / 19 / 21 buttons, controls 2-5 actuators

White backlight

One-touch Flat and Zero-G position buttons

Preset memory positions: 1-6

Optionals: Flashlight, UBL, Child safety lock, Pair button, Massage

## Wired Handsets

Tried and tested easy-to-use handsets with a wired connection. OKIN wired handsets have a robust housing and are designed for high reliability and precise inputs. Equipped with a reset function, the ForelinePro and Topline handsets can be used for controlling both movements at the same time. Furthermore, both handsets are equipped with a hook on the back side. In addition, the ForelinePro has an integrated flashlight.

### ● Baseline



2 / 6 buttons

Controls 1-2 actuators

### ● HS-ForelinePro



2 / 3 / 4 / 5 / 6 / 7 buttons

Controls 1-3 actuators

Optionals: Flashlight

### ● Deluxe



6 buttons, controls 2 actuators





# CONTROL UNITS

## For Box-Spring Beds or Slatted Frames

OKIN RF receivers have a bi-directional 2.4 GHz technology which is completely interference-free. The compact design of our receiver units enables them to be used in space-critical products directly tacked on the OKIMAT 4. This is perfect for electrically adjustable bed systems that have very low construction heights.

### RF eco basic

### Control Units



- 2.4 GHz technology
- Controls 2 actuators

### RF ECO BT MEMO

### Control Units



- 2.4 GHz technology
- Bluetooth®
- Underbed light
- Timer memory integrated
- Controls 2 acutators

### HE 150



- 2.4 GHz technology
- Bluetooth®
- Underbed light
- Memory integrated
- MFP Socket for external LED, USB and massage motors
- Optional: Socket for 3rd and 4th motor

### CB.37



- Controls 2-6 actuators, 6 preset memory positions
- Wired synchronization
- RF&BT dual-mode communication, Built-in Bluetooth®
- Reserved MFP port
- Optionals: UBL, RGB UBL, Motion sensor light, Single hall sensor actuator, Massage, USB charger, Voice control, Smart anti-snore, Sleep sense, Sonic massage.



USB-A-C charger



Power down box  
for emergency lowering



Alphadrive 5



RF Handsets



Massage motor



LED Light Strips

# ACCESSORIES

## On OKIMAT 4+2 EPS RF-BT Memory Massage

OKIN offers a wide range of optional components for adjustable beds. Many of these improve comfort, for example, massage motors, LED lights or USB sockets for charging mobile phones or tablets.



## USB Charger Sockets

● PO.11.01/02



USB-A + USB-C 20W/10W  
USB Input: 29V  
USB Output: 5V/2.5A, 9V/2A, 12V/1.5A

● PO.04.02/03



USB-A + USB-C 18W/10W  
USB Input: 29V  
USB Output: 5V/3A, 9V/2A, 12V/1.5A

● PO.13.01/02



USB-A + USB-C 18W/10W  
USB Input: 29V  
USB Output: 5V/3A, 9V/2A, 12V/1.5A

## Underbed LED Light Strips

● 92644



Input: 29V DC  
Aluminium housing  
Connecting cables for up to 3 light strips

● R5.113



Input: 29V DC  
2.1DC Plug / 2\*24AWG or 4-pin Plug  
Light Color: Warm White  
(2800-3200k color temperature)  
RGB LED Strip (Optional)

● FP.07.03



Easy to install, can be placed on the bed side or the bed leg.  
Activated by human movement in a dark environment,  
automatically turns the underbed light on/off.  
Infrared detection sensor.

## Massage Motor Kits

● MM.01.01



Input: 24-29V DC  
Speed: 2200RPM  
Works with control box

## Wall plug SMPS PW.10

## Power Supplies



Input: 100-240V AC 50Hz~60Hz 2.5A  
Output: 29V DC 1.5A / 1.8A / 2.0A  
Overvoltage, overcurrent, overheating and short circuit protection

## Desktop SMPS PW.20



Input: 100-240V AC 50Hz~60Hz 2.5A  
Output: 29V DC 1.8A / 2.0A / 3.0A  
Overvoltage, overcurrent, overheating and short circuit protection

## Desktop SMPS PW.30



Input: 100-240V AC 50Hz~60Hz 2.5A  
Output: 29V DC 1.8A / 2.0A  
Overvoltage, overcurrent, overheating and short circuit protection  
Back up battery compartment (2\*9V batteries)



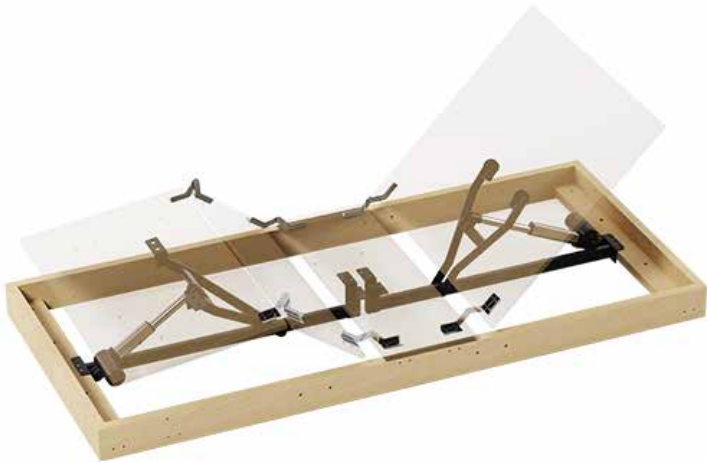
# OKIN BED MECHANISM

## High Quality Integrated Actuator System

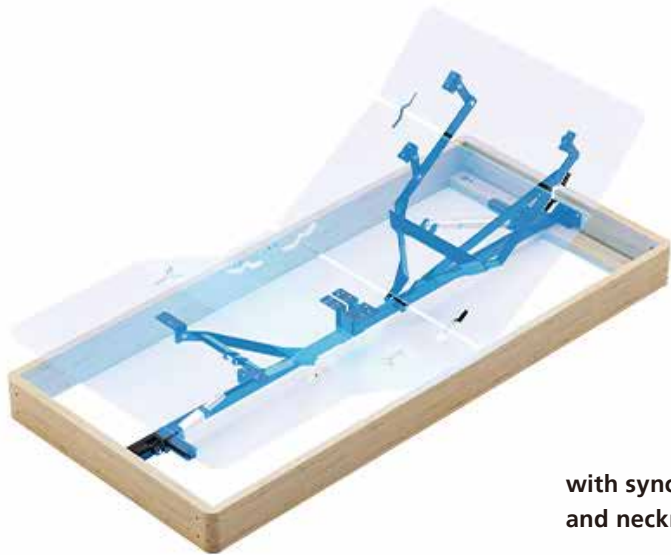
The mechanism is ideal for bedding applications with 1-motor systems or 2-motor systems. It is suitable for all standard box spring beds and continental beds. Thanks to separated mechanisms for the head and foot section adjustment as well as a particularly low installation height, the mechanism offers maximum flexibility in the design of motor-driven box spring beds. The complete system is suitable for all common bed widths and lengths. A convenient emergency lowering function via remote control provides additional safety. The OKIN Bed Mechanism is also compatible with a wide range of OKIN control units and remotes and is characterized by particularly simple assembly.

### OBM100

### OKIN Bed Mechanism



### OBM105



with synchronised backrest and neckrest

|                     |  |
|---------------------|--|
| Weight capacity     | 200 kg   |
| Installation height | 10.6 cm  |
| Actuator            | Alphadrive 5                                       |
| Switch              | Compatible with all OKIN control units and remotes |
| Power supply        | PW.30_100 – 240V/AC                                |



Operate your electrically adjustable premium bed with your smartphone or tablet. The app FurniMove was designed to work in perfect sync with your applications. OKIN offers standard IOS and Android Apps for your individual requirements that are easy to install and use.



Personalized custom interface



App Store



Google Play

- **Invisible Aesthetics**  
Ultra-slim design, can be perfectly hidden under the bed, delivering sound right by your pillow. Ideal even for space-limited foldable beds.
- **Powerful Sound Field**  
Dual 20W stereo speakers with professional audio units, offering powerful sound in a small package—rich bass and clear highs.
- **Smart Control Convenience**  
Instant Bluetooth® connection to smartphones or TVs, transforming your bedroom into a private cinema in seconds, perfect for entertainment and promoting better sleep.
- **Safety and Durability**  
Low-voltage DC power supply ensures safety and reliability, providing long-lasting performance.



Germany

DewertOkin GmbH  
Weststrasse 1  
32278 Kirchlegern  
Deutschland / Germany  
Tel: +49 5223 979 0  
Fax: +49 5223 751 82  
E-mail: info@dewertokin.de  
Web: www.dewertokin.com

China Jiaxing

Add: No. 1507, Taoyuan Road, Gaozhao Street, Xiuzhou District,  
Jiaxing City, Zhejiang Province, China  
Service Hotline: +86-400-887-8573  
Tel: +86-(0)573-8228-1028  
E-mail: info@dewertokin.com  
Web: www.dewertokintechnology.com

China Huizhou

Add: Building C6, Zhantao Industrial Zone,  
Weibu Village, Qiuchang Town, Huiyang District,  
Huizhou, Guangdong, China  
E-mail: info@dewertokin.com

China Taiwan

Phoenix Mecano Hong Kong Limited Taiwan Branch  
Add: Room 4E-12, No.5, Hsin-Yi Road, Sec. 5, 11011  
Taipei, Taiwan, China  
Contact: Allen Wang  
Phone: +886 2 27252582  
E-mail: allen@pmtwn.com.tw

Korea

Add: No. 506, Bomb Building, 617-3, Gajeong-dong, Seo-gu,  
Incheon, Korea.  
Zip Code: 22731  
Contact: Amos An  
Mobile: +82-10-6865-0599  
E-mail: amos.an@dewertokin.com

Japan

Add: 52 Saiwai-Cho 420-0067 Shizuoka-City  
Contact: JR Piao  
Mobile: +81-90-6507-0205  
E-mail: jr.piao@dewertokin.com  
Web: www.dewertokin.com/ja/

Australia

Add: 64 Butler Way,Tullamarine, Victoria, Australia, 3043  
Tel: +61 (3) 9338 56 99  
Fax: +61 (3) 9338 53 99  
E-mail: info@phoenix-mecano.com.au  
Web: www.phoenix-mecano.com.au

Vietnam

Lo H5-2(khu B1), duong D9, khu cong nghiep rach bap, xa an dien,  
thi xa ben cat, tinh binh duong, Vietnam  
Contact: Josiah Xia  
Mobile: +84 0913922780  
Email: Josiah.Xia@dewertokin.com

Malaysia / India

Singapore / Thailand

Indonesia

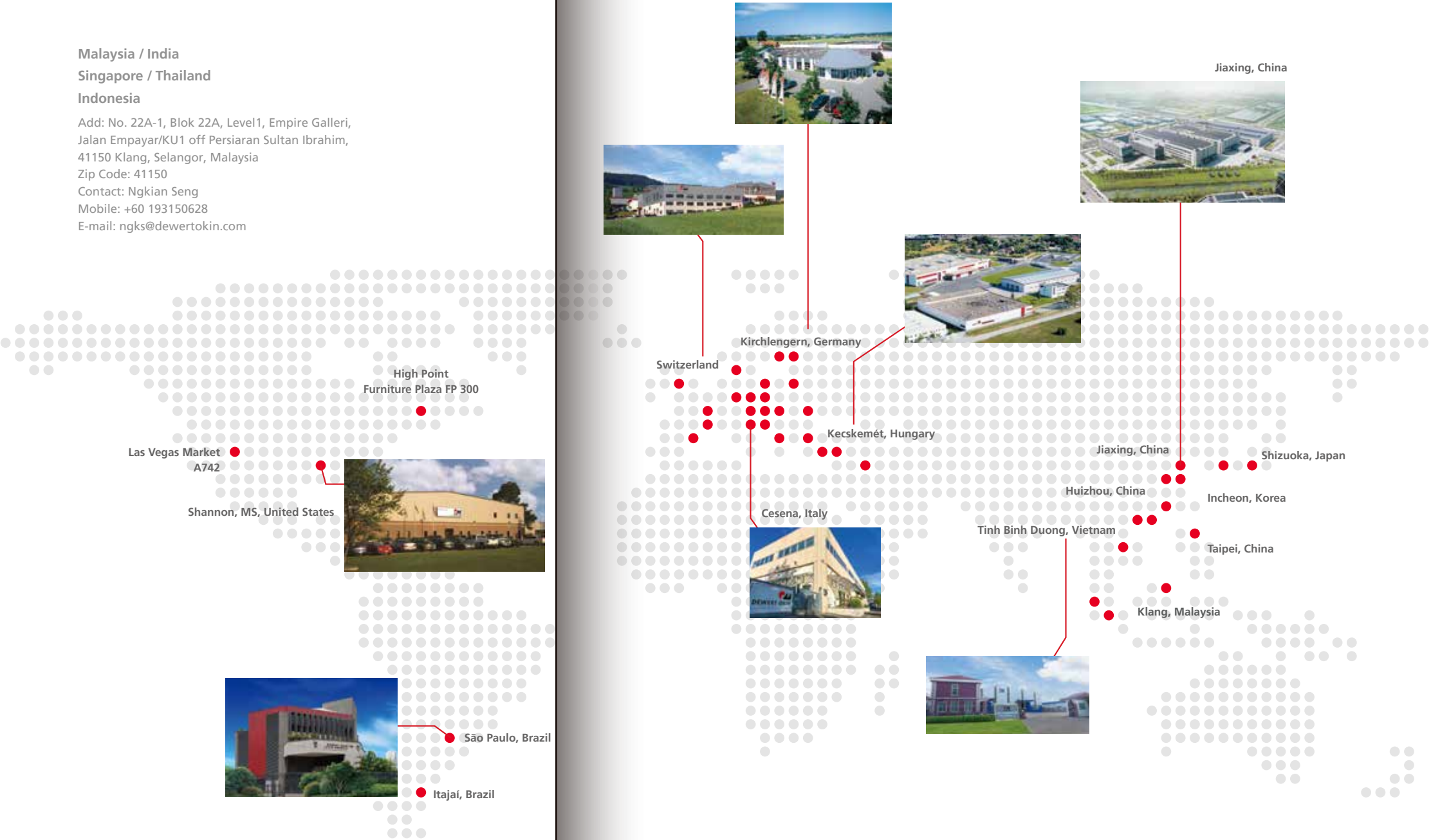
Add: No. 22A-1, Blok 22A, Level1, Empire Galleri,  
Jalan Empayar/KU1 off Persiaran Sultan Ibrahim,  
41150 Klang, Selangor, Malaysia  
Zip Code: 41150  
Contact: Ngkian Seng  
Mobile: +60 193150628  
E-mail: ngks@dewertokin.com

United States

Okin America INC.  
Add: 291 CDF Blvd Shannon, MS 38868  
Tel: +1 662-566-1000  
E-mail: orders.okin@okinamerica.com  
Web: www.okinamerica.com

Brazil

DewertOkin Latin America  
Add: Av. Prof. Alceu Maynard de Araujo, 185, São Paulo, SP  
Zip Code: 04626-160  
Contact: Adriana Shinzato  
E-mail: vendas@dewertokin.com.br  
Tel: +55.11.56434190  
Web: www.dewertokin.com.br





Over 40 years of experience.



Follow us:  DewertOkin

